



Talent acquisition technology for Health & Social Care

Creating the perfect recruitment journey to help you provide perfect care

Recruitment in the Health & Social Care sector can be extremely challenging, candidates are scarce at the same time that vacancies are rising.

But help is at hand.

Eploy's complete Talent Acquisition platform empowers Health & Social Care providers to take control of their hiring processes, work collaboratively and make great hires.

Plus, Eploy is designed to play nicely with your other systems, like HRIS, background and right-to-work checking. Finally, the complete recruitment journey for health and social care recruitment!



Attract more candidates

Seamlessly integrates into your website for online job search, adverts and applications.

Post directly to your preferred job boards.



Optimise processes

Deliver ideal candidate journeys for regulated and non-regulated roles.

Adapt and improve your processes.



Ensure compliance

Collect everything you need from candidates throughout your process.

Monitor everything with live dashboards.

For hiring managers and central recruitment teams, Eploy's complete Applicant Tracking System helps deliver top talent, so you can deliver top care.

Whether you are recruiting for regulated or non-regulated positions, Eploy's complete talent acquisition platform has everything you need to attract, engage, hire and onboard your ideal talent.

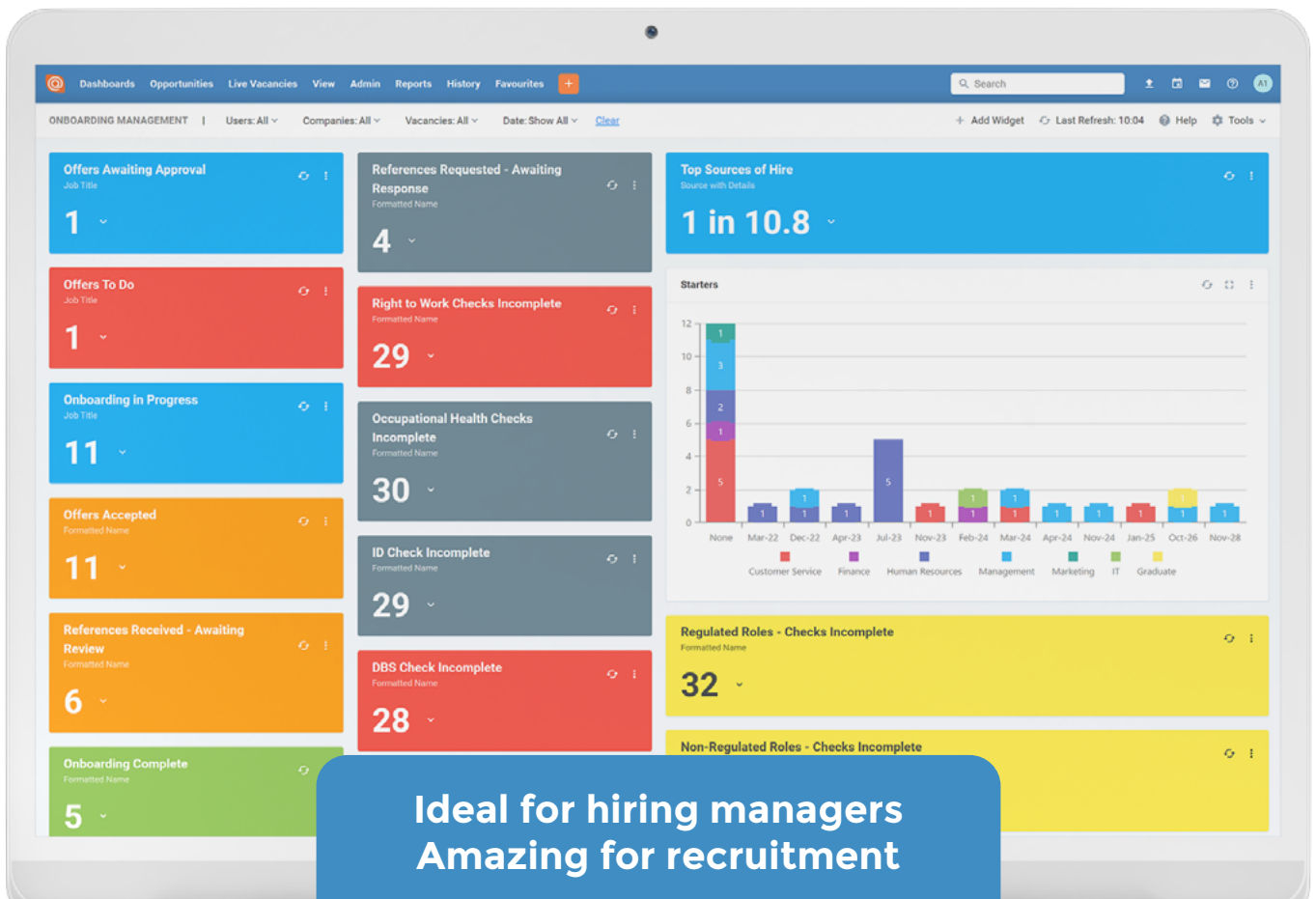
Plus, Eploy is designed to be simple to adopt by your hiring managers. Our unique Hiring Manager Portal makes it easy for hiring managers to raise requests to recruit and manage their candidates through your process.

Next, Eploy's built-in job board posting means you can post to job boards more efficiently, like NHS jobs, Care & Health Jobs, Care & Nurse Jobs and Indeed, helping you to maximise your return on investment.

Eploy empowers you with a full range of tools for candidate assessment, so you can make better decisions. Features like automatic screening questions that ensure only suitable applications are progressed. Next, Eploy helps you to identify and move the best candidates through your process and make great new hires.

And, for fully compliant onboarding, Eploy has you covered. Everything is fully customisable and personalised, so you can ensure all your vetting and checking, including employment history, is carried out on time for your new starters first day.

With a fully open RESTful API and a Marketplace of approved partners, Eploy soon becomes the hub of your recruitment.



From raising a request to recruit and progressing your candidates, Eploy delivers the perfect journey for everyone.

And with Eploy Onboarding you'll be in complete control, ensuring your new hires are checked and vetted before they start.



Dashboards that track progress, compliance & success

With Eploy's award-winning dashboards and analytics you can monitor, measure and analyse every aspect of your care recruitment.

Discover your best advertising channels, track every recruitment campaign, even monitor the pulse of your vetting and onboarding, all in one system.

At Eploy, we work with many of the UK's leading care providers. And because we know each business is different, our features and processes are designed to enable an agile approach that you can flex and evolve to your needs.

So whether you need name-blind applications, additional workflows, or support multiple brands or business functions, you'll find Eploy to be the most adaptable talent acquisition technology that consistently delivers the results you demand.

Leading care providers rely on Eploy



KEY FEATURES FOR HEALTH & SOCIAL CARE

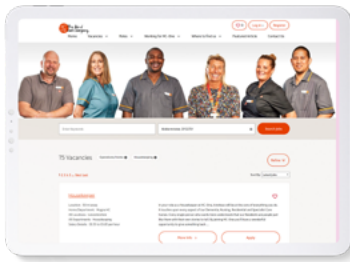
- Fully mobile optimised careers pages
- Supports multi-brands
- Quick search, advanced filtering & location search
- Save jobs and apply later
- WCAG 2.1 AA Compliance (DAC Certified)
- Suggested, featured & latest jobs
- Customisable registration forms
- Registration & application screening questions
- Customisable candidate journey
- Automated CV parsing

- Secure candidate profile pages
- View and manage applications
- Job Alert preferences
- Interview scheduling & slot-picking
- Email & SMS auto-reminders
- GDPR consent & privacy preferences
- Online offers, e-signatures & onboarding

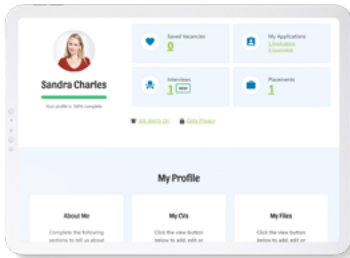
- Drag-and-drop hiring pipelines
- Supports blind recruiting
- Flexible scoring options
- Define acceptable criteria for automatically progressing suitable candidates
- Automatically rule-out unsuitable candidates and applications
- Email & SMS automated and personalised candidate communications

- Easy to use, task-based Hiring Manager Portal
- Create and edit new joiner forms
- Secure data collection
- Visual onboarding process flows builder
- Offer approval workflow management
- Personalised onboarding journeys
- Online reference collection & management
- Enable offer acceptance and contract signing online
- Downloadable contract packs
- Electronic Signatures

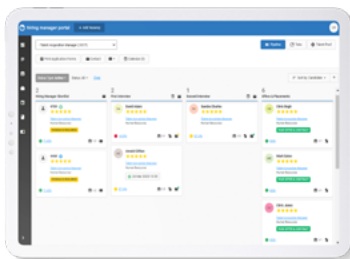
- Full RESTful API
- Zoom & MS Teams integrations
- HRIS* exports & integrations
- Background Checking (inc. DBS and Enhanced DBS)*
- Right to Work*
- Assessment testing providers*
- Eploy Marketplace



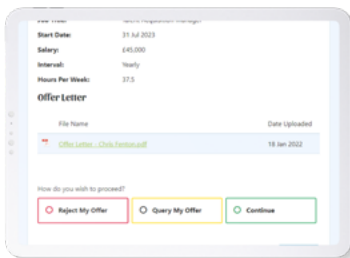
Job Search & Applications



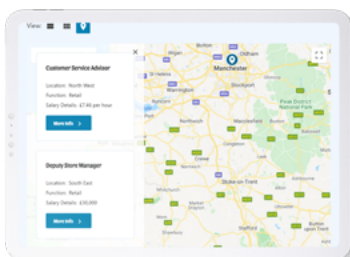
Candidate Portal



Candidate Management



Onboarding



Integrations

Edwin Avenue
Kidderminster
DY11 7RA
Visit: employ.co.uk
Tel: 0800 073 42 43

